





Contents

Benches	4.
Lighting	6.
Planters	8.
Water Features & Planting Accessories	10.
Cycle Stands	11.
Bins	12.
Wayfinding	13.
Signage	15.
Railings, Barriers and Bollards	18.
Handrails	20.
Drainage and Gullies	21.
Miscellaneous	22.



## Benches

### Type A

Location:  
Frobisher sculpture court

Materials:  
Painted steel



### Type F

Location:  
Frobisher sculpture court

Materials:  
Timber incorporated with  
planters



### Type B

Location:  
Upper podium & St Giles  
environs

Materials:  
Painted steel tubes with  
timber slats



### Type G

Location:  
Lakeside terrace

Materials:  
Steel frame with plastic  
seat and back rest



### Type C

Location:  
Upper podium

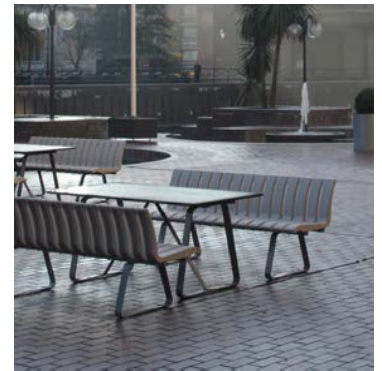
Materials:  
Single seat timber



### Type H

Location:  
Lakeside terrace

Materials:  
Steel frame with plastic  
seat and back rest with  
matching table



### Type D

Location:  
Lower podium

Materials:  
Timber bench



### Type I

Location:  
Thomas Moore & Speed  
Lawns & St Giles Precinct

Materials:  
Double timber bench



### Type E

Location:  
Upper podium

Materials:  
Double sided steel frame  
timber slats



### Type J

Location:  
GSMD

Materials:  
Timber bench with cast  
iron frame



### Type K

Location:  
GSMD

Materials:  
Painted steel table and  
bench unit



### Type L

Location:  
City of London School for  
Girls

Materials:  
Timber children's picnic  
table



### Type M

Location:  
Lakeside terrace

Materials:  
Timber planter with  
integrated seating and  
loose tables and chairs





## Lighting

### Lamp column - Type A

Location:  
Podium

Materials:  
Steel column fixed to raised  
brick plinth, globe lamp



### Lamp column - Type D

Location:  
St Giles Precinct

Materials:  
Cast iron column,  
traditional style lamp



### Lamp column - Type E

Location:  
Lower podium

Materials:  
Steel column painted  
green, double globe  
lamp



### Lamp column - Type B

Location:  
Lakeside terrace

Materials:  
Steel column fixed to raised  
brick plinth, 4no. globe  
lamps



### Lighting bollard - Type F

Location:  
Various, within planting

Materials:  
Steel



### Lighting bollard - Type G

Location:  
Various, within planting

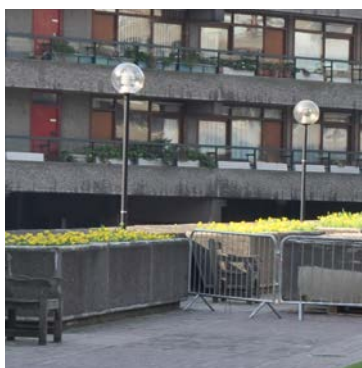
Materials:  
Steel and LED lamp,  
replacement to above



### Lamp column - Type C

Location:  
Podium parapets

Materials:  
Steel column fixed to  
podium parapet, globe  
lamp



### Lighting bollard - Type H

Location:  
Various, within planting

Materials:  
Steel and LED lamp,  
replacement to type F



Wall mounted - Type I

Location:  
Barbican Centre

Materials:  
4no. Globe lamps fixed to  
walls



Soffit lighting - Type N

Location:  
Underside of various  
residential blocks

Materials:  
Soffit mounted light fitting  
with surface mounted  
conduit



Wall mounted - Type J

Location:  
White Lyon Court

Materials:  
Globe lamps fixed to  
walls



Soffit lighting - Type O

Location:  
Barbican Centre and below  
Frobisher Crescent

Materials:  
Ornate glass lamp fittings



Soffit lighting - Type K

Location:  
Underside of various  
residential blocks

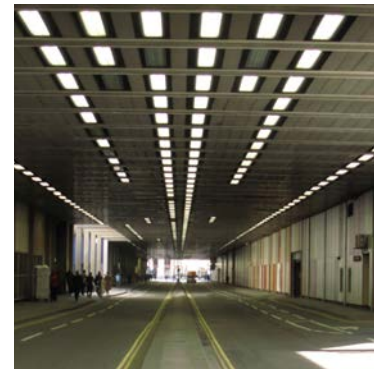
Materials:  
Hemispherical lamp with  
surface mounted conduit



Soffit lighting - Type P

Location:  
Beech Street

Materials:  
Soffit fixed highways light-  
ing



Soffit lighting - Type L

Location:  
Frobisher Crescent

Materials:  
Steel column, globe lamp



Soffit lighting - Type M

Location:  
Underside of various  
residential blocks

Materials:  
Soffit mounted light  
fitting





## Planters

### Type A

Location:  
Podium parapets

Materials:  
Concrete effect fibreglass



### Type F

Location:  
Various

Materials:  
Timber



### Type B

Location:  
Frobisher sculpture court

Materials:  
Timber



### Type G

Location:  
Frobisher sculpture court

Materials:  
Timber incorporated with  
planters



### Type C

Location:  
Frobisher sculpture court

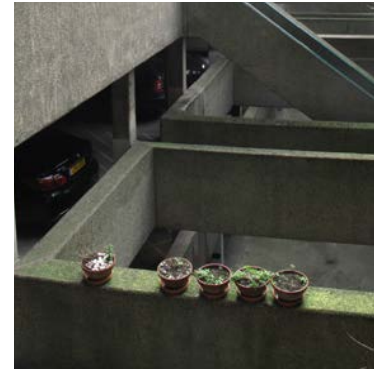
Materials:  
Integrated with estate  
structure



### Type H

Location:  
Various

Materials:  
Domestic scale terracotta  
plant pots



### Type D

Location:  
Various

Materials:  
Exposed aggregate  
concrete



### Type I

Location:  
Frobisher sculpture  
court

Materials:  
Stainless steel,  
rectangular



### Type E

Location:  
Lauderdale & Cromwell  
tower entrances

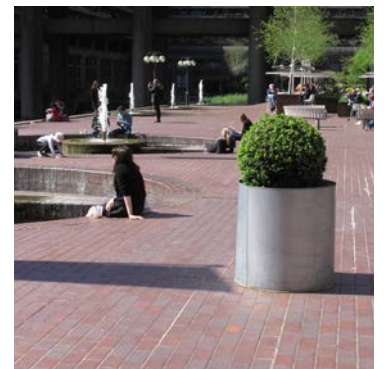
Materials:  
Exposed aggregate  
concrete



### Type J

Location:  
Lakeside terrace

Materials:  
Stainless steel, circular





## Planters

### Type K

Location:  
Lakeside terrace

Materials:  
Timber with loose seating



### Type P

Location:  
Wood Street Bar & Restaurant

Materials:  
Painted steel



### Type L

Location:  
Various

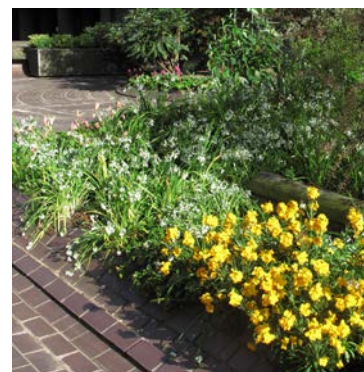
Materials:  
Circular section timber  
lengths



### Type Q

Location:  
Upper podium

Materials:  
Integrated planter with  
raised timber central  
section



### Type M

Location:  
Residential balconies

Materials:



### Type N

Location:  
St Giles precinct

Materials:  
Steel with integrated  
timber seating



### Type O

Location:  
City of London School for  
Girls

Materials:  
Timber half barrels



Water Features & Planting Accessories

Fountain - Type A

Location:  
Upper podium

Materials:  
Cast Dolphin fountain  
in lined pool with tiled  
edging



Fountain - Type G

Location:  
Upper podium

Materials:  
Tiled fountain surround  
with boulders



Fountain - Type B

Location:  
Upper podium

Materials:  
Tiled fountain surround  
with boulders



Dome pergola

Location:  
Lake

Materials:  
Painted steel



Fountain - Type D

Location:  
Lake

Materials:  
Bush hammered concrete  
structure



Linear pergolas

Location:  
Thomas Moore and  
Speed lawns

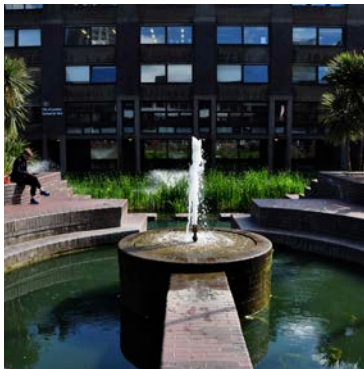
Materials:  
Painted steel



Fountain - Type E

Location:  
Lakeside terrace

Materials:  
Tiled fountain surround



Irrigation infrastructure

Location:  
Upper podium

Materials:  
Plastic piping, redundant



Fountain - Type F

Location:  
Lakes

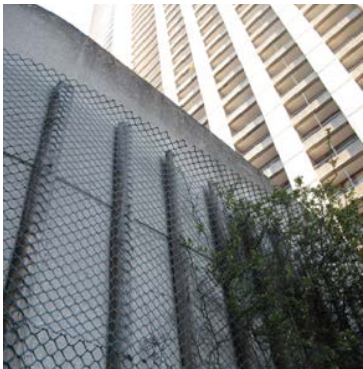
Materials:  
Jets in water



Climber supports

Location:  
Upper podium

Materials:  
Timber batons fixed to  
concrete with plastic  
mesh





## Cycle Stands

### Type A

Location:  
Streets surrounding  
estate

Materials:  
Stainless steel



### Type B

Location:  
Silk Street & Aldersgate  
Street

Materials:  
TfL cycle hire dock



### Type C

Location:  
GSMD

Materials:  
Stainless steel



### Type D

Location:  
City of London School  
for Girls

Materials:  
Stainless steel, surface  
fixed



### Type E

Location:  
Below ramp off Moor  
Lane

Materials:  
Stainless steel behind  
weldmesh fence



## Bins

### Cigarette bin - Type A

Location:  
Lakeside terrace

Materials:  
Stainless steel surface  
fixed



### Refuse bin - Type F

Location:  
Frobisher Crescent

Materials:  
Plastic



### Cigarette bin - Type B

Location:  
Frobisher Crescent

Materials:  
Wall mounted steel bin



### Grit bin - Type G

Location:  
Podiums

Materials:  
Plastic



### Recycling bin - Type C

Location:  
Lakeside terrace

Materials:  
Plastic



### Grit bin - Type H

Location:  
Podium, Brandon Mews

Materials:  
Plastic



### Refuse bin - Type D

Location:  
Lakeside terrace

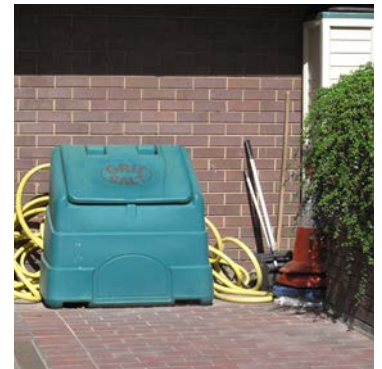
Materials:  
Painted steel



### Grit bin - Type I

Location:  
GSMD

Materials:  
Plastic



### Refuse bin - Type E

Location:  
GSMD

Materials:  
Painted steel





## Wayfinding

### Wayfinding sign A

Location:  
Beech Street

Materials:  
Wall mounted steel corner  
panel



### Wayfinding sign F

Location:  
Corner of Beech Street  
& Whitecross Street

Materials:  
Floor fixed steel tower



### Wayfinding sign B

Location:  
Podium stairs

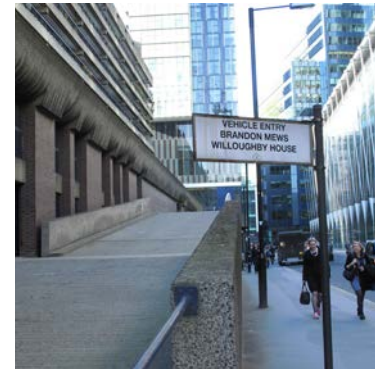
Materials:  
Wall mounted steel  
panel



### Wayfinding sign G

Location:  
Moor Lane

Materials:  
Pole mounted vehicular  
directional sign



### Wayfinding sign C

Location:  
Various

Materials:  
Wall mounted steel panel



### Wayfinding sign H

Location:  
Lauderdale tower

Materials:  
Wall fixed enamel steel  
wayfinding



### Wayfinding sign D

Location:  
Gilbert Bridge

Materials:  
Perspex



### Wayfinding sign I

Location:  
Various

Materials:  
Wall fixed site wide  
wayfinding



### Wayfinding sign E

Location:  
Streets surrounding estate

Materials:  
CoL city wide monolith



### Wayfinding insert

Location:  
Podium

Materials:  
Cast steel for Jubilee  
Walkway recessed into  
tiles



## Wayfinding

### Map A

Location:  
Frobisher sculpture court

Materials:  
Wall mounted steel panel  
signage



### City of London street sign

Location:  
Various

Materials:  
Wall mounted



### Map B

Location:  
Mountjoy house & Moor Lane

Materials:  
Wall mounted steel panel  
enamel map



### Block Names

Location:  
Various

Materials:  
Individual lettering fixed  
to block walls



### Map C

Location:  
Various

Materials:  
Perspex framed maps,  
backlit where necessary



### Wayfinding tower

Location:  
Various

Materials:  
Floor fixed steel tower



### Wayfinding paint

Location:  
Various

Materials:  
Surface painted  
wayfinding text



### Ward sign

Location:  
St Giles precinct

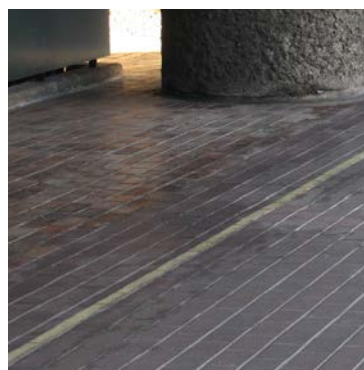
Materials:  
Wall fixed steel nameplate



### Yellow line

Location:  
Various

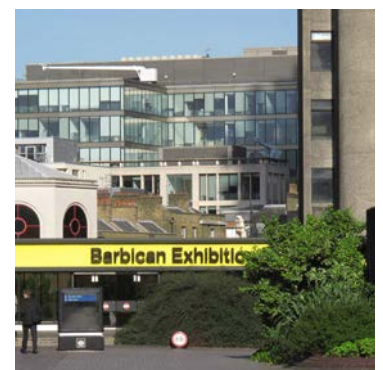
Materials:  
Yellow line, mix of paint  
and thermoplastic applied  
to tiles



### Exhibition Centre sign

Location:  
Upper podium

Materials:  
Plastic lettering





## Signage

### Barbican Centre A

Location:  
Various

Materials:  
Wall fixed large scale  
branding



### Barbican Centre F

Location:  
Barbican Cinema, Beech  
Street

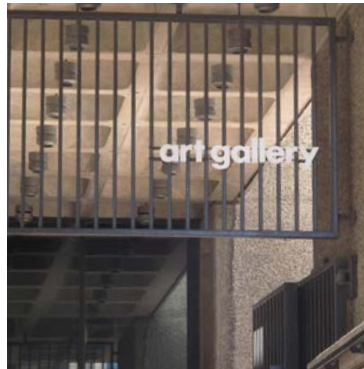
Materials:  
Plastic signage fixed to  
glass wall



### Barbican Centre B

Location:  
Frobisher Crescent  
stairway

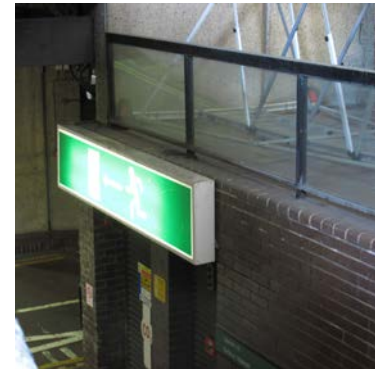
Materials:  
Fixed to railing above  
gate



### Fire safety A

Location:  
Below Gilbert Bridge

Materials:  
Wall fixed, backlit  
perspex escape sign



### Barbican Centre C

Location:  
Lakeside terrace

Materials:  
Steel flag pole with textile  
flags of various colours



### Fire safety B

Location:  
Various

Materials:  
Wall fixed steel signs



### Barbican Centre D

Lakeside terrace

Materials:  
Floor fixed steel  
tower



### Commemorative Plaque A

Location:  
Lakeside terrace

Materials:  
Ceramic wall mounted  
plaque



### Barbican Centre E

Location:  
Barbican Cinema, Beech  
Street

Materials:  
Plastic branding fixed to  
glass wall



### Commemorative Plaque B

Location:  
Gilbert Bridge

Materials:  
Carved stone memorial  
panel



## Signage

### Restrictive sign A

Location:  
GSMD

Materials:  
PC concrete bollards with  
fixed steel signage



### Restrictive sign F

Location:  
Upper podium

Materials:  
Wall mounted plastic panel



### Restrictive sign B

Location:  
Various

Materials:  
Wall fixed site wide  
signage



### Restrictive sign G

Location:  
Defoe House

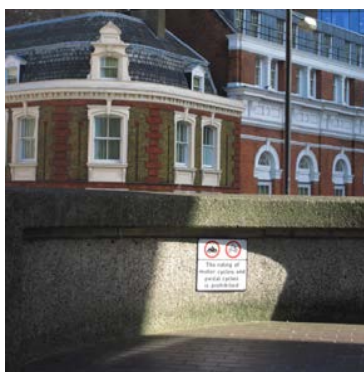
Materials:  
Railing fixed



### Restrictive sign C

Location:  
Various

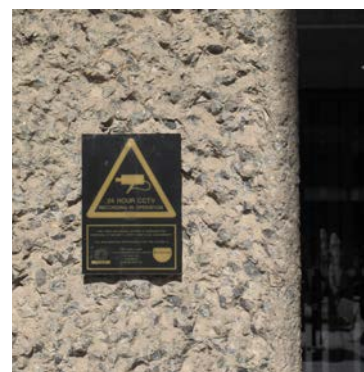
Materials:  
Wall fixed site wide no  
cycling/motorcycles  
signage



### Restrictive sign H

Location:  
Various

Materials:  
Wall fixed sign



### Restrictive sign D

Location:  
Cromwell Tower  
railings

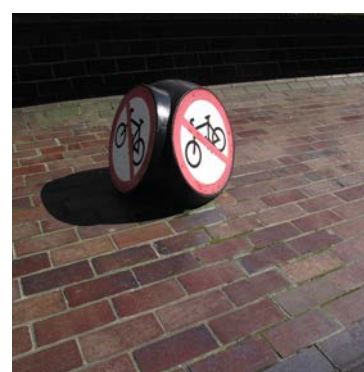
Materials:  
Railing fixed steel  
panel



### No cycling bollard

Location:  
Various

Materials:  
Floor fixed plastic bollard



### Restrictive sign E

Location:  
Resident garden entrances

Materials:  
Railing fixed steel panel



### Byelaws

Location:  
Various

Materials:  
Timber framed wall fixed





## Signage

### Vehicular sign A

Location:  
Various

Materials:  
Wall fixed steel panel



### Vehicular sign F

Location:  
Beech Street

Materials:  
Post mounted steel panel



### Vehicular sign B

Location:  
Fore Street car park entrance

Materials:  
Wall fixed steel panel



### Vehicular sign G

Location:  
Lauderdale Tower forecourt

Materials:  
Wall fixed steel panel



### Vehicular sign C

Location:  
Fore Street car park entrance

Materials:  
Wall fixed steel panel



### CoL crest

Location:  
Various

Materials:  
Wall fixed crest



### Vehicular sign D

Location:  
Fore Street car park entrance

Materials:  
Wall fixed steel panel



### Vehicular sign E

Location:  
Lauderdale Tower forecourt

Materials:  
Various



## Railings, Barriers and Bollards

Bollard - Type A

Location:  
Lauderdale tower entrance

Materials:  
Painted steel



Parapet - Type F

Location:  
Podiums

Materials:  
Concrete structure with  
tiled face and bush  
hammered concrete top



Bollard - Type B

Location:  
Lakeside terrace to  
Guildhall School of  
Music

Materials:  
Concrete bollards with  
steel chain and low  
gate



Balustrade - Type G

Location:  
Frobisher sculpture court

Materials:  
Painted steel with glass  
infill



Bollard - Type C

Location:  
Lauderdale tower en-  
trance

Materials:  
Painted steel



Balustrade - Type H

Location:  
Lakeside terrace

Materials:  
Stainless steel



Bollard - Type D

Location:  
St Giles precinct

Materials:  
Painted steel drop bollard



Balustrade - Type I

Location:  
Frobisher sculpture court

Materials:  
Timber



Bollard - Type E

Location:  
St Giles precinct

Materials:  
Painted steel



Balustrade - Type J

Location:  
Various

Materials:  
Painted steel





## Railings, Barriers and Bollards

Balustrade - Type K

Location:  
Speed lawn

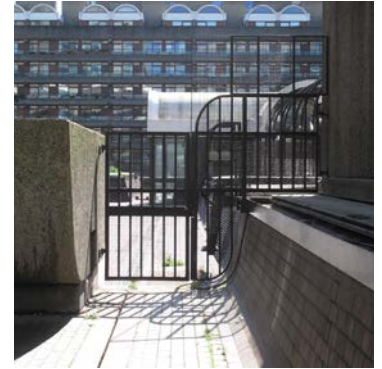
Materials:  
Painted steel



Security gate - Type P

Location:  
Guildhall School of Music  
roof

Materials:  
Painted steel



Balustrade - Type L

Location:  
St Giles precinct

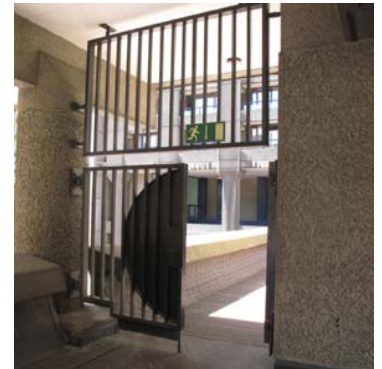
Materials:  
Painted steel



Gate - Type Q

Location:  
Frobisher sculpture court

Materials:  
Painted steel



Balustrade - Type M

Location:  
Podium above Silk Street

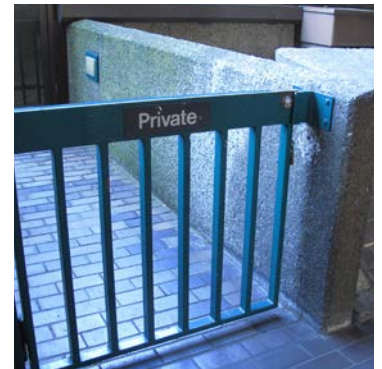
Materials:  
Painted steel balustrade  
around gap in concrete  
parapet



Gate - Type R

Location:  
Podium, Brandon Mews

Materials:  
Painted steel



Balustrade - Type N

Location:  
St Giles precinct

Materials:  
Painted cast iron



Gate - Type S

Location:  
St Giles precinct

Materials:  
Painted steel raising  
barrier



Fence - Type O

Location:  
Podiums

Materials:  
Painted steel



## Handrails

### Handrail - Type A

Location:  
Various

Materials:  
Ground fixed painted steel



### Handrail - Type F

Location:  
Podium to Silk Street

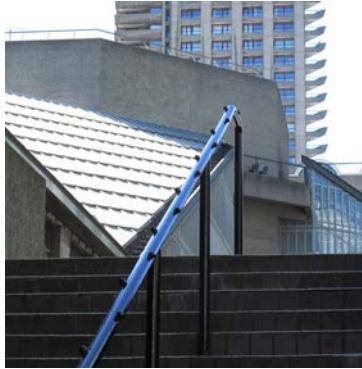
Materials:  
Painted steel structure with stainless steel handrail



### Handrail - Type B

Location:  
Various

Materials:  
Ground fixed painted steel with anti skate features



### Handrail - Type G

Location:  
Various

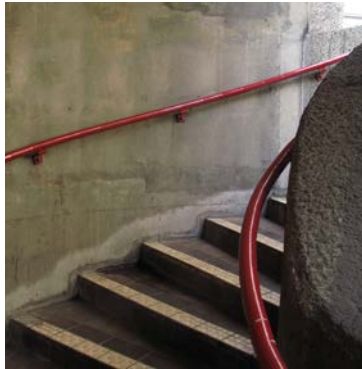
Materials:  
Wall fixed painted steel within recess in concrete



### Handrail - Type C

Location:  
Various

Materials:  
Wall fixed painted steel



### Handrail - Type H

Location:  
City of London School for Girls

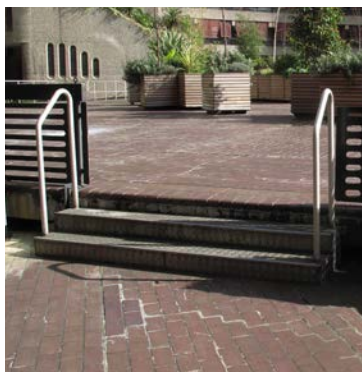
Materials:  
Painted steel, tile inlaid ramp



### Handrail - Type D

Location:  
Frobisher sculpture court

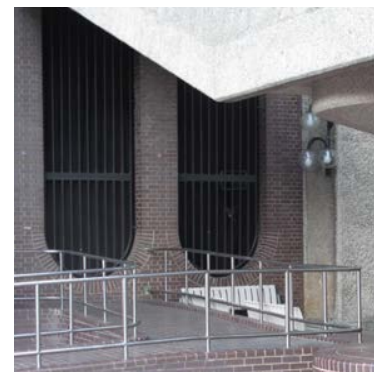
Materials:  
Galvanised steel step units, not fixed with stainless steel handrail



### Handrail - Type I

Location:  
Lakeside terrace

Materials:  
Stainless steel



### Handrail - Type E

Location:  
Upper podium, exhibition centre

Materials:  
Ground fixed painted steel





## Drainage and gullies

### Planter drainage - Type A

Location:  
Podium planters

Materials:  
Cast iron grille



### Linear drain - Type F

Location:  
Podiums

Materials:  
Stainless steel grille



### Planter drainage - Type B

Location:  
Podium planters

Materials:  
Plastic pipe



### Linear drain - Type G

Location:  
Podiums

Materials:  
Cast iron grille



### Paving drainage - Type C

Location:  
Podiums

Materials:  
Cast iron grille



### Manhole - Type H

Location:  
Podium planters

Materials:  
Raised cast iron man hole



### Paving drainage - Type D

Location:  
Various

Materials:  
Cast iron grille



### Planter vent - Type I

Location:  
Podium planters

Materials:  
Raised steel vent cover



### Paving drainage - Type E

Location:  
Podiums

Materials:  
Linear drain below tiles,  
running to stainless steel  
grille





## Miscellaneous

### Pedestrian deterrent

Location:  
Various

Materials:  
Pre cast concrete



### Play equipment

Location:  
Thomas Moore Lawn,  
below Seddon House

Materials:  
Off the shelf painted  
steel



### Artwork

Location:  
Lower podium link to  
Frobisher crescent

Materials:  
Ceramic panels by  
Dorothy Annan, 1960.  
Originally installed on  
Fleet Building, Farringdon  
Street



### Play equipment

Location:  
Speed Lawn

Materials:  
Off the shelf painted  
steel



### Brick plinth A

Location:  
Upper podium

Materials:  
Concrete structure  
with brick tiles fixed to  
surface



### CCTV

Location:  
Lakeside terrace

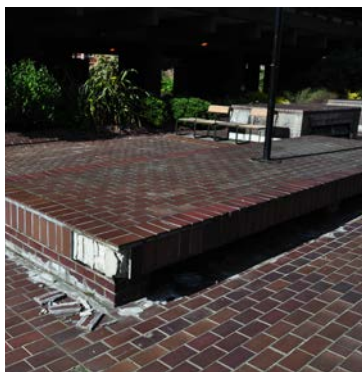
Materials:  
Painted steel, wall fixed



### Brick plinth B

Location:  
Upper podium

Materials:  
Concrete structure  
with brick tiles fixed to  
surface



### Duck Exit Ramp A

Location:  
Upper podium

Materials:  
Concrete structure  
with brick tiles fixed to  
surface



### Brick plinth C

Location:  
Upper podium

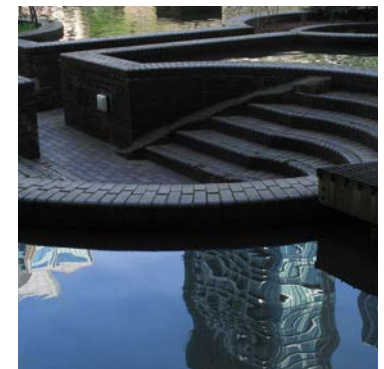
Materials:  
Concrete structure  
with brick tiles fixed to  
surface, updated edge  
detail to above plinth



### Duck Exit Ramp B

Location:  
Upper podium

Materials:  
Insitu concrete over brick





### Lift and Stair

Location:  
Corner of Silk Street &  
Moor Lane

Materials:  
Painted steel, stainless  
steel and glass



### Expansion joint cover

Location:  
Podiums

Materials:  
Steel covers, fixed into  
tiles



### Vent

Location:  
Upper podium

Materials:  
Steel vent over brick  
plinth



### Emergency Telephone A

Location:  
Various

Materials:  
Steel



### Sculpture A

Location:  
Cromwell Tower

Materials:  
Bush hammered concrete  
structure



### Emergency Telephone B

Location:  
Various

Materials:  
Steel



### Sculpture B

Location:  
Upper podium

Materials:  
Stainless steel



### Emergency Telephone C

Location:  
Various

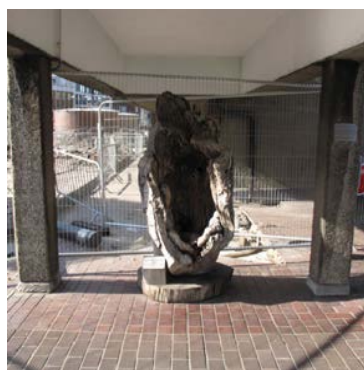
Materials:  
Steel



### Sculpture C

Location:  
Upper podium

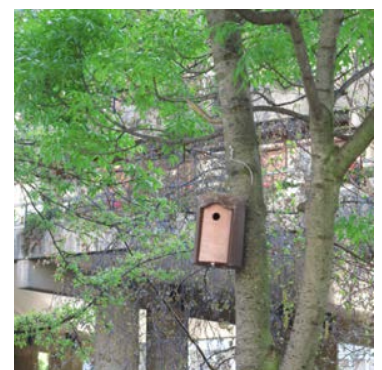
Materials:  
Timber tree stump



### Bird box

Location:  
St Giles precinct

Materials:  
Wood concrete



## Miscellaneous

### Historic artefact A

Location:  
St Giles precinct

Materials:  
Stone



### Historic artefact B

Location:  
St Giles precinct

Materials:  
Stone on brick plinth



### Historic artefact C

Location:  
St Giles precinct

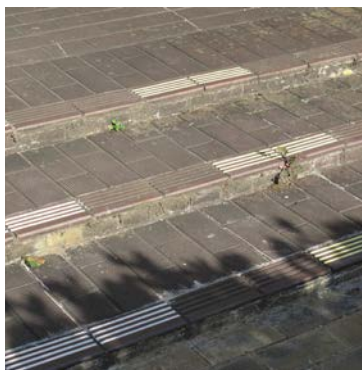
Materials:  
Stone tombstones on  
brick plinth



### Step tread A

Location:  
Upper podium

Materials:  
Grooved tile step units  
with coloured inlay



### Step tread B

Location:  
Upper podium

Materials:  
Textured tile step units  
with coloured inlay

