



**Easy  
Read**

# Our plan for children and young people in the City of London

2026 to 2029



# Easy Read



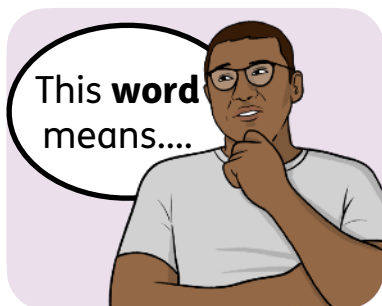
This is an Easy Read version of some information. It may not include all of the information but it will tell you about the important parts.



This Easy Read booklet uses easier words and pictures. Some people may still want help to read it.



Some words are in **bold** - this means the writing is thicker and darker. These are important words in the booklet.



Sometimes if a bold word is hard to understand, we will explain what it means.



[Blue and underlined](#) words show links to websites and email addresses. You can click on these links on a computer.

# What is in this booklet

About this booklet.....4

What we want.....5

Our plan.....6



You can fill in a quick survey to say what you think about this Easy Read booklet:  
<https://www.easy-read-online.co.uk/easy-read-feedback-survey>

# About this booklet



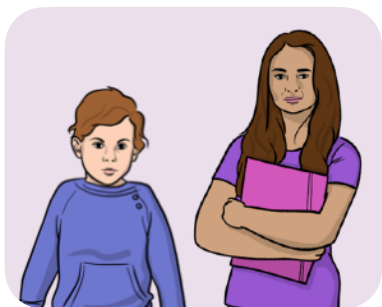
This booklet is from the City of London Corporation.

We provide local authority services for people who live in the City of London.



This booklet is about our **vision** for children and young people who live in the City of London.

A **vision** is how we want things to be in the future.



Children and young people are aged 0 to 19 years old. Or up to 25 years old for young people with **SEND**.



**SEND** stands for **Special Educational Needs and Disabilities**. Children and young people with SEND need some extra support to learn and grow.

# What we want

We want the City of London to be a place where all children and young people:



- Are safe.



- Are healthy.



- Are happy.



- Can learn and grow.



- Have good relationships and feel part of their community.

# Our plan



Our plan explains what we want to see for children and young people over the next 3 years.



It also explains how we will approach our work with children and young people.

We will:



- Be **ambitious** - this means we will have big ideas and try to make a difference.

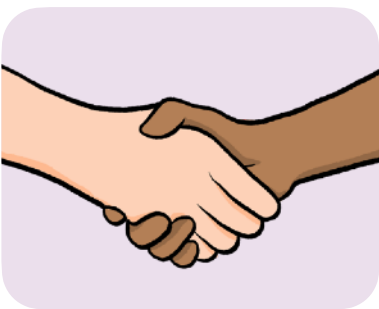


- Be open and honest.

We will also:



- Listen to children and young people and respond to what they are saying.



- Support **equity** and **equality**.  
**Equity** and **equality** mean making sure that everyone is treated fairly.

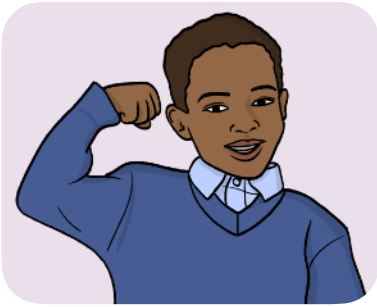


- Support **diversity**.  
**Diversity** means different kinds of people from different backgrounds and different experiences.



- Support communities that include everyone.

We will also:



- Focus on children and young people's strengths.



- Work with partner organisations, children, young people and families.



We will have separate action plans that explain how we will follow our plan.

This Easy Read booklet was produced by [easy-read-online.co.uk](http://easy-read-online.co.uk)  
The booklet includes images licensed from Shutterstock.